

STRATEGIC LEADERSHIP TEAM



Sharon Kemp
Chief Executive



Jo Brown
Assistant Chief Executive



Judith Badger
Strategic Director
Finance & Customer Services



Paul Woodcock
Strategic Director
Regeneration & Environment



Nicola Curley
Strategic Director
Children & Young People's Services



Ian Spicer
Strategic Director Adult Care,
Housing and Public Health



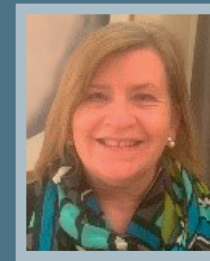
Lee Mann
Assistant Director
Human Resources & OD



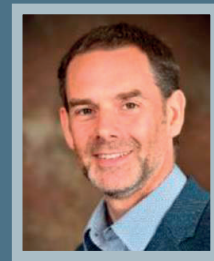
Rob Mahon
Assistant Director
Financial Services



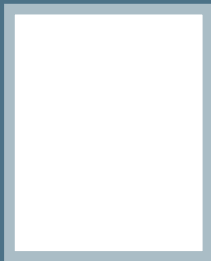
Simon Moss
Assistant Director
Planning Regeneration & Transport



Monica Green
Assistant Director
Safeguarding



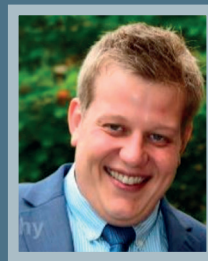
Ben Anderson
Director
Public Health



Vacant
Head of Communications
& Marketing



Phillip Horsfield
Assistant Director
Legal Services



Sam Barstow
Assistant Director
Community Safety & Street Scene



David McWilliams
Assistant Director
Early Help & Family Engagement



Scott Matthewman
(Interim) Assistant Director
Strategic Commissioning



Fiona Boden
Head of Policy,
Performance & Intelligence



Luke Sayers
Assistant Director
Customer, Information & Digital



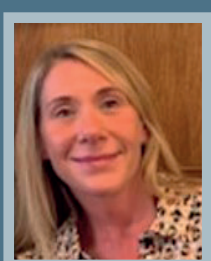
Polly Hamilton
Assistant Director
Culture, Sport & Tourism



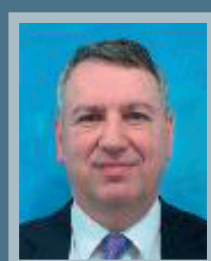
Helen Sweaton
Joint Assistant Director
Commissioning and Performance



Kirsty Littlewood
Assistant Director of
Adult Care and Integration



Emma Hill
Head of Democratic Services



David Webster
Head of Internal Audit



Nathan Heath
Assistant Director
Education & Skills



James Clark
Assistant Director
of Housing



Lily Hall
Head of Change
& Innovation



Martin Hughes
Head of Neighbourhoods

